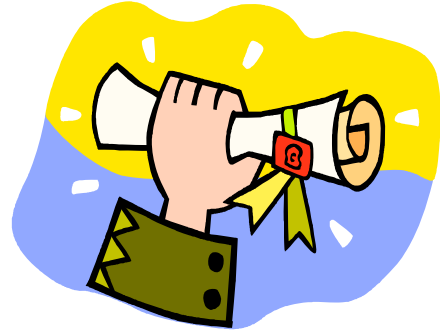


GED TESTING July-Dec '09



CONGRATULATIONS!!!

You are certified "Test Ready" for the GED Exam. Please follow the instructions below to schedule your test date. You may choose from the test sites/dates on back and complete the appropriate forms with your instructor prior to registration.

**YOU ARE SCHEDULED & ELIGIBLE TO
TEST ONLY IF PAYMENT IS MADE IN
ADVANCE**

***SEE PAYMENT INFORMATION**

???QUESTIONS???

*Cindy Sproehnle Assessment Center Director
(859)442-1159 or*

E-mail: cindy.sproehnle@kctcs.edu

PAYMENT INFORMATION FOR COVINGTON LOCATIONS

- Payment must be made at least 2 days in advance to: "Gateway Community & Technical College"
- Cash, Check, money order, credit card, and vouchers are accepted
- Cost: \$50
- Retake: \$25 per subject
- Payment must be taken to the Assessment Center at the Covington Campus between 8:00am to 4:00pm daily
- Or payment may be mailed with the Test Payment Form and copies of GED 123 to:

Gateway Community & Technical College
Att. Cindy Sproehnle
1025 Amsterdam Road
Covington, KY 41011
Phone: (859)442-1159
Fax: (859)442-4192
Email: cindy.sproehnle@kctcs.edu

***NO PAYMENT
ACCEPTED
ON TEST DATE --
Must Be PREPAID**

**Please Note Test Fee Increase as of JULY 1, 2009*

Holmes High School

2500 Madison Pike
Covington, KY 41011

Testing From 4:30pm-9:00pm
Math & Language Arts (writing) offered
on the following Tuesdays:

- * Tuesday, August 18
- * Tuesday, September 22
- * Tuesday, October 20
- * Tuesday, November 17
- * Tuesday, December 8

4:30pm..... Math

6:00pm Language Arts (writing)

Testing From 5:00pm-9:00pm
Science, Social Studies, & Language Arts
(reading) offered on the following Thursdays:

- * Thursday, August 20
- * Thursday, September 24
- * Thursday, October 22
- * Thursday, November 19
- * Thursday, December 10

5:00pm..... All 3 Tests

*Enter from Eastern Ave. Come in the East
door, go up one flight of stairs to the second
floor, and the room is in that hallway.

Room 3202.

In case of inclement weather refer to TV or radio, go to
www.gateway.kctcs.edu or call (859)441-4500 for
closing information.



Gateway Community & Technical College

1025 Amsterdam Road
Covington, KY 41011

Testing From 7:30am-5:00pm
All 5 Tests offered on the following Saturdays:

- * Saturday, July 11
- * Saturday, August 29
- * Saturday, September 12
- * Saturday, October 10
- * Saturday, October 31
- * Saturday, December 5

7:30am Math

9:30am Language Arts (writing)

12:30pm Science, Social Studies, &
..... Language Arts (reading)

*Room Information will be posted.



HIGHER EDUCATION BEGINS HERE

On Test Date Please Bring:

- 1) Receipt for Payment or copy of Payment Form and date paid.
- 2) Valid Photo ID (State or Federal Issued).

***YOU ARE NOT PERMITTED TO TEST
WITHOUT THE ABOVE ITEMS**

***NO PAYMENT ACCEPTED
ON TEST DATE**

DIRECTIONS TO HOLMES HIGH SCHOOL

2500 MADISON AVE.
COVINGTON, KY 41011

From the North: (Cincinnati)

Take **I-75 South** across **Brent Spence Bridge**
Exit at 12th St./Pike St.
Continue one block past light at **Pike St. to 12th St.**
Turn **left** on **12th St.**
Turn **right** on **Madison Ave.**
Continue **1.2 Miles** past **Kroger** on your **right**
You will see **Holmes High School** on your **left**
Continue past Holmes
Turn **left** on **Levassor Ave.**
Turn left onto **Eastern Ave.**
Turn left into **Holmes** parking lot

From the South: (Lexington)

Take **I-75 North**
Exit at Pike St/12th St
Turn **right** on **12th St.**
Turn **right** on **Madison Ave.**
Continue **1.2 Miles** past **Kroger** on your **right**
You will see **Holmes High School** on your **left**
Continue past Holmes
Turn **left** on **Levassor Ave.**
Turn left onto **Eastern Ave.**
Turn left into **Holmes** parking lot

From I-275:

Take I-275 East or West toward I-71/I-75
Take exit I-71/I-75 toward Cincinnati
Exit at Pike St/12th St
Turn **right** on **12th St.**
Turn **right** on **Madison Ave.**
Continue **1.2 Miles** past **Kroger** on your **right**
You will see **Holmes High School** on your **left**
Continue past Holmes
Turn **left** on **Levassor Ave.**
Turn left onto **Eastern Ave.**
Turn left into **Holmes** parking lot

*Enter from Eastern Ave. Come in the East door, go up one flight of stairs to the second floor, and the room is in that hallway. Room 3202.

DIRECTIONS TO COVINGTON CAMPUS

1025 AMSTERDAM ROAD
COVINGTON, KY 41011
PHONE (859)441-4500

From the North: (Cincinnati)

Take **I-75 South** to **Exit 189** (Kyles Lane)
Turn **Right** at end of exit ramp
Go to the stoplight and turn **Right** onto **Dixie Hwy.**
Go one block to the stoplight
Turn **Left** onto **Sleepy Hollow Dr.** (Just before St. Agnes Church)
Turn **Right** onto **Old State Road** (first street on your right)
Continue until you reach **Terrace Lane** (on your left)
Turn **Left** on **Terrace Lane**
Continue until you reach **Amsterdam Road**
Turn **Right** onto **Amsterdam Road**
Continue through a residential area
Turn **Right** up the hill to **Gateway Covington Campus**

From the South: (Lexington)

Take **I-75 North** to **exit 189** (Kyles Lane)
Turn **Left** at end of exit ramp
Go to the stoplight and turn **Right** onto **Dixie Hwy.**
Go one block to the stoplight
Turn **Left** onto **Sleepy Hollow Dr.** (Just before St. Agnes Church)
Turn **Right** onto **Old State Road** (first street on your right)
Continue until you reach **Terrace Lane** (on your left)
Turn **Left** on **Terrace Lane**
Continue until you reach **Amsterdam Road**
Turn **Right** onto **Amsterdam Road**
Continue through a residential area
Turn **Right** up the hill to **Gateway Covington Campus**

From I-275:

Take **I-275 East or West** toward **I-71/I-75**
Take **exit I-71/I-75 North** toward **Cincinnati**
Take **exit 189**(Kyles Lane)
Turn **Left** at end of exit ramp
Go to the stoplight and turn **Right** onto **Dixie Hwy.**
Go one block to the stoplight
Turn **Left** onto **Sleepy Hollow Dr.** (Just before St. Agnes Church)
Turn **Right** onto **Old State Road** (first street on your right)
Continue until you reach **Terrace Lane** (on your left)
Turn **Left** on **Terrace Lane**
Continue until you reach **Amsterdam Road**
Turn **Right** onto **Amsterdam Road**
Continue through a residential area
Turn **Right** up the hill to **Gateway Covington Campus**

From Covington: Follow **Pike St.** around bend until top of hill. Look for St. Agnes Church on your right. Turn **Right** on **Sleepy Hollow Dr.** and follow above directions.

